

**Educational Technologies and Hopkins School**  
Present



# Hopkins Summer Chess Program

**When:** Session 1 July 11 – 15, Session 2 July 18 – 22, 8:30am – 1pm

**Where:** Hopkins School, 986 Forest Rd. New Haven, CT.

**What:** Chess is a fascinating game, which can be played and enjoyed at all levels. Educational research indicates chess improves academic performance! The practical application of the skills learned while playing chess are the same skills necessary for academic excellence and sound life-long decision-making.

- *Concentration*
- *Critical Thinking*
- *Problem Solving*
- *Strategic Planning*
- *Creativity*
- *Pattern Recognition*

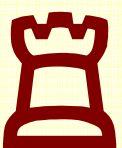
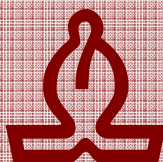
- *Analysis*
- *Synthesis*
- *Evaluation*
- *Competition*
- *Good Sportsmanship*
- *Good Decision-making!!!*

**Tuition:** \$ 350/week payable to Hopkins School

**Register:** [http://mediafiles01.myschoolcdn.com/ftpimages/82/misc/misc\\_164620.pdf](http://mediafiles01.myschoolcdn.com/ftpimages/82/misc/misc_164620.pdf)

Driving Directions <http://www.hopkins.edu/admissions/directions#directions>

Questions? Contact Jim Celone 203-933-9997 [jcel@aol.com](mailto:jcel@aol.com),



**VIEW FLYER ONLINE NOW!** at [www.edutechchess.com](http://www.edutechchess.com) or [www.CTChess.com](http://www.CTChess.com)

- Lower School Program Grades 3 – 6
- Upper School Program Grades 7 – 12
- Tuition: \$350 per week. Questions? Contact Jim Celone 203-933-9997 [jcel@aol.com](mailto:jcel@aol.com)



*“Food for Thought: Chess is the Martial Art of the Mind”*

Educational Technologies

**Lower School Program Grades 3 – 6** This is an introductory course designed to give the student a basic understanding of modern chess theory, and its role in fostering good decision-making skills through active, hands-on problem-solving. Students will learn how to set up the board and move the pieces, how to Capture, how to read and write chess notation, opening principles, elementary tactics and strategy, how to checkmate, the ideas of space, time, positional play, combinations, how to analyze a position, and develop a basic opening repertoire, getting them ready for tournament play.

In addition,

- ❖ Students will develop competent reasoning and problem-solving skills.
- ❖ Students will be able to explain solutions to problems.
- ❖ Students will read and write chess notation.
- ❖ Students will apply the following strategic concepts to solve problems: calculation, force, time, space, pawn structure.
- ❖ Students will apply the following tactical concepts to solve problems: the fork, the pin, the skewer, the double attack, the discovered attack, the decoy, the clearance sacrifice, deflection, forced checkmates.
- ❖ Students will develop an appreciation for chess as a coherent body of knowledge and as a worthwhile human endeavor.

**Upper School Program Grades 7 – 12** The Upper School Program offers a more abstract study of problem-solving and strategic decision-making. The study of the following positional concepts – basic endgames, thinking techniques and list of imbalances, calculation and combinations, the role of minor pieces in the middle-game, space and preventive maneuvers, the mystery of the center, weak pawns, strong pawns, weak squares, material loss and sacrifice, temporary imbalances; making use of extra material, open files, and using imbalances in every phase of the game – are related to previously mastered concepts, extend their opening repertoire and ready the student for tournament play.

In addition,

- ❖ Students will practice the 3 keys to success: *Tactics, Tactics, and more Tactics!*
- ❖ Students will demonstrate effective written and oral communication.
- ❖ Students will be competent in reasoning and problem-solving skills.
- ❖ Students will be able to explain solutions to problems.
- ❖ Students will demonstrate their understanding of the above positional concepts.
- ❖ Students will develop an appreciation for chess as a coherent body of knowledge and as a worthwhile human endeavor.

**Directions: Hopkins School, 986 Forest Rd., New Haven, CT. 06515**

**From I-91 or I-95 southbound:** Exit onto Route 34 (the Oak Street Connector - Downtown). This is exit 1 from I-91 or exit 47 from I-95. Proceed to the end of the Connector and then exit straight ahead to the parallel Frontage Road, which is still Route 34. Continue on 34 until it apparently ends. Turn right, then left, still on 34. At the 3rd light, turn right on Forest Road (122); continue 1 mile and go past Hopkins main entrance on the left to traffic light. Turn left onto Edgewood Way. Take next two lefts to back entrance off Knollwood Drive.\*

**From I-95 northbound:** Take exit 43, turning left onto Campbell Avenue (122). Continue on 122 for 2 miles. You will cross both the Post Road (1) and Derby Avenue (34) and the name will change to Forest Road. About one mile beyond the Route 34 intersection, go past Hopkins main entrance on the left to the traffic light. Turn left onto Edgewood Way. Take next two lefts to back entrance off Knollwood Drive.\* [www.hopkins.edu/admissions/directions/](http://www.hopkins.edu/admissions/directions/)

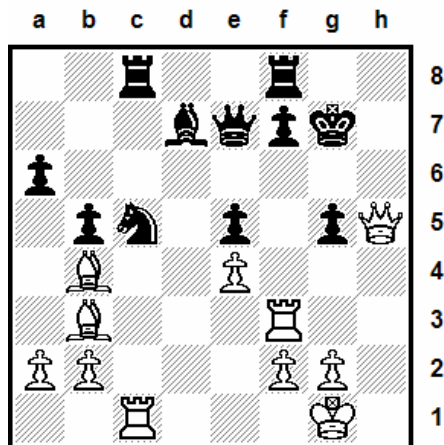
**Play SHREDDER  
CHESS Online!**

at

[www.edutechchess.com](http://www.edutechchess.com)

or

[www.CTChess.com](http://www.CTChess.com)



**White to mate in 6. Can you find it?**

**Check for School Programs  
and  
Tournament Results**

at

[www.edutechchess.com](http://www.edutechchess.com)

or

[www.CTChess.com](http://www.CTChess.com)

□ The Upper School Summer Program at Hopkins provides a balanced array of academic and enrichment courses for students who will enter grades 7 through 12 in the fall. Six weeks in length, the summer session runs from late June until the beginning of August and is held on the Hopkins School campus. Three types of courses are offered in the Upper School: academic credit courses, which provide 90+ hours of teaching in a given subject area and require an equivalent amount of out-of-class study time; non-credit academic review courses which provide between 30 and 60 hours of class-based learning; and enrichment courses for students seeking to expand their horizons or strengthen core learning skills. Classes are small, typically averaging between 10 and 14 students.

□ The Lower School Program is an age-appropriate, six-week learning and enrichment program for elementary school students who will be entering grades 3 through 6 in the fall. As in the Upper School, the summer session runs from late June to early August. Our teachers are selected for their command of core educational disciplines at this level (reading, writing, mathematics, and science), their ability to work easily and effectively with younger students; and, perhaps most importantly, their desire to ensure that learning continues to be both stimulating and fun. Classes are typically 10 to 12 students on average.

□ Hopkins Summer Catalog [http://mediafiles01.myschoolcdn.com/ftpimages/82/misc/misc\\_164620.pdf](http://mediafiles01.myschoolcdn.com/ftpimages/82/misc/misc_164620.pdf)

For more information please contact the Director Kevin Cronin, ext 372 at 203.397.1001 x540.

